

American Champion Aircraft Corp.  
Rochester, WI 53167

Service Letter: 424

Date: March 8, 2004

Title: Inspection of Flap Wing Root Pulley and Cable

Models: Bellanca/American Champion, 7GCB, 7GCBC, 8GCBC, All Serial Numbers

Description: Flap pulley wear and cable fraying have been reported. The wing root flap pulleys and cables should be inspected for wear and lubrication using the Inspection Intervals and the Procedure in the next two sections of this letter. Proper pulley and cable lubrication will reduce wear.

Installation of an optional bracket and larger flap pulley will further reduce wear and allow for inspection at standard service intervals (see Inspection Intervals, Optional Retrofit, and Parts Required sections below).

The inspection procedures described herein are not intended to be a substitute for a properly performed 100 hour / annual inspection. Refer to Advisory Circular (AC) 43.13-1B: Acceptable Methods, Techniques, and Practices: Aircraft Inspection and Repair.

Inspection Intervals:

Aircraft manufactured with wing root flap pulley part number 1-2395 (older design pulley)

7GCB – All Serial Numbers

7GCBC – Serial Numbers 1358-2004 and Prior

8GCBC – Serial Numbers 451-2004 and Prior, 453-2004, 454-2004

Every 100 hours of operation or annual inspection, which ever is least

Every 50 hours for operations with more than 10 flap cycles/hour or prolonged flap use

Aircraft manufactured with or modified to wing root flap pulley part number 11-0968 (larger flap pulley)

7GCBC – Serial Numbers 1359-2004 and Later

8GCBC – Serial Numbers 452-2004, 455-2004 and Later

All Models and Serial Numbers Retrofitted with 2-2297 Bracket and 11-0968 Pulley

Inspect at every 100-hour / annual inspection

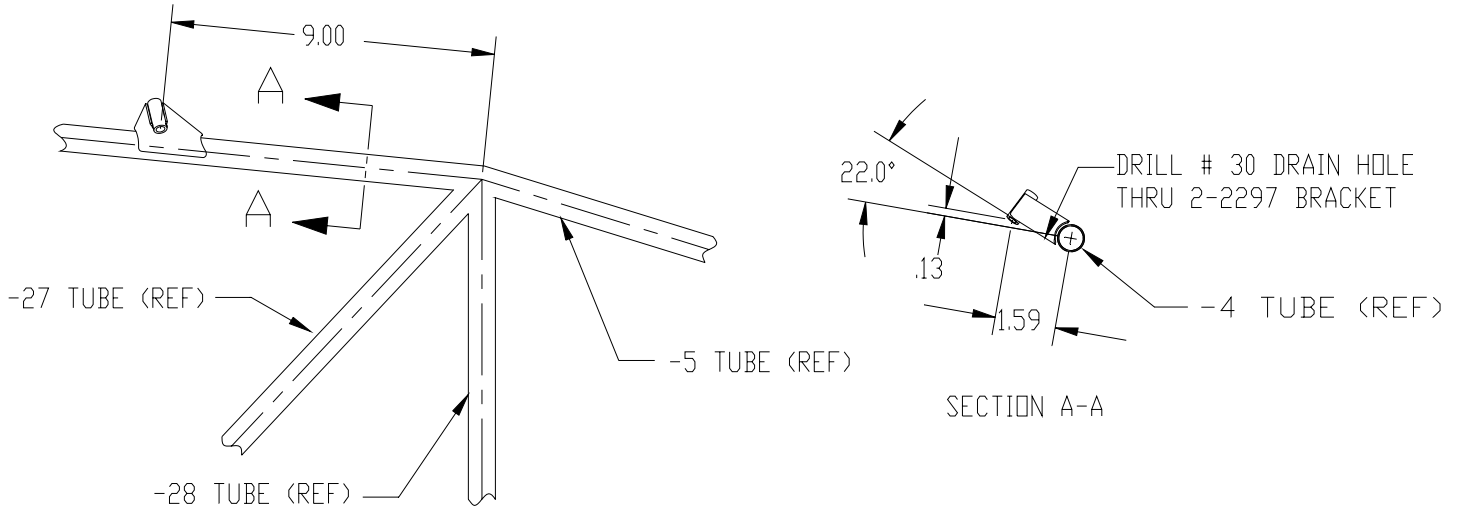
Procedure:

- 1) Remove both wing gap covers
- 2) Inspect left and right pulleys (P/N 1-2395) for wear or binding, replace pulley and bushing if necessary
- 3) Inspect flap cables (P/N 1-9023) for wear, replace if necessary
- 4) Lubricate pulleys with LPS Laboratories part number LPS-2 or equivalent
- 5) Replace wing gap covers

Optional Retrofit:

American Champion Aircraft Corp.  
Rochester, WI 53167

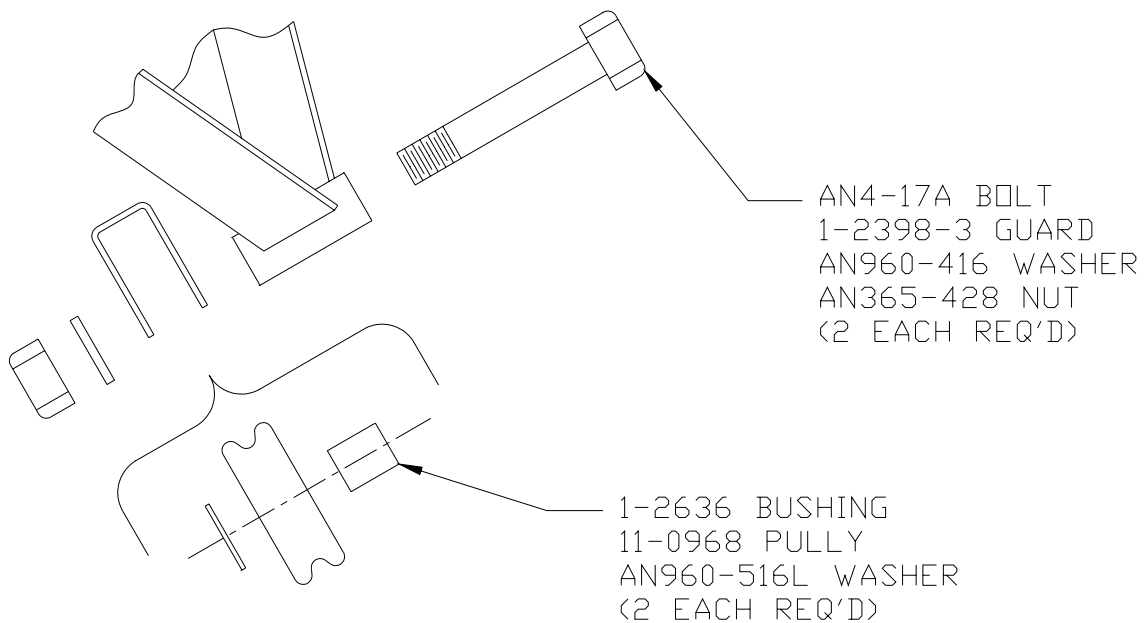
- 1) Remove fabric, 4" diameter hole centered on flap bracket
- 2) Remove 2-1597 bracket, cut and grind flush to fuselage frame
- 3) Install 2-2297 bracket per figure 2, weld all exterior edges per champion specification CW-1 or other industry accepted process for tubular steel welding



LEFT SHOWN, RIGHT OPPOSITE

**Figure 1, 2-2297 Bracket Installation**

- 4) Finish untreated surfaces with zinc-chromate primer or equivalent
- 5) Patch and repaint fabric in accordance with applicable ACAC service manual
- 6) Install 11-0968 pulley per figure 2



**Figure 2, Installation 11-0968 Pulley**

American Champion Aircraft Corp.  
Rochester, WI 53167

Approval: Retrofit should be recorded in an aircraft logbook entry. Figures and data within this service letter are FAA approved via ACAC Drawings 4-1101 rev. "D" and 7-1131 rev. "H".

Parts Required:

Part Number	Description	Quantity
2-2297	Bracket	1L / 1R
11-0968	Pulley	2
1-2398	Guard	2
1-2636	Bushing	2
AN4-17A	Bolt	2
AN365-428	Nut	2
AN960-516L	Washer	2
AN960-416	Washer	2